

Data Sheet

Safe handling of liquid chemicals

Avoid product mix-up with new encoded quick connector

Discharging liquid chemicals from their packaging without compromising their quality and purity can be a critical and time-consuming process step. Employees also need to be protected from harm during the discharging process. EMD Millipore's innovative quick connector makes the discharging process safer, faster and cleaner.

Suitable for use with 950-liter IBCs and 200-liter drums, the system comprises a quick connector screwed to the top of a pre-installed dip tube. The dip tube and quick connector are encoded for specific chemical families, such as solutions from sodium hydroxide, hydrochloric acid, acetic acid and others. This sophisticated encoding system avoids product mix-up while ensuring easy handling.

The parts of this system that come into contact with the product (the dip tubes and connectors) are manufactured from polyethylene, which does not contaminate the solutions in question. (Please also see our Leachables and Extractables study, which you can download from our website.)

All parts are manufactured in a cleanroom environment.



Benefits

- Process safety due to closed system and dry coupling
- Quick and simple connection with pre-installed encoded dip tubes
- No product mix-up thanks to product-specific encoding system

Technical features

1

The new quick connector is connected to the top of a pre-installed dip tube by screwing it together.



3

Coding and orientation pins are at the code disk of the dispense head and at the dip tube to carry out a fast and safe adjustment of the two components to each other.

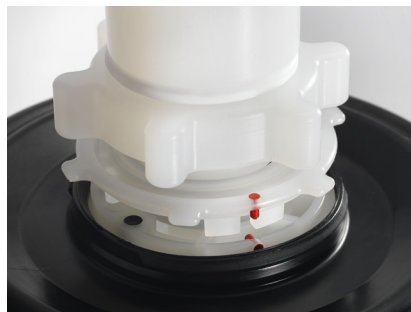
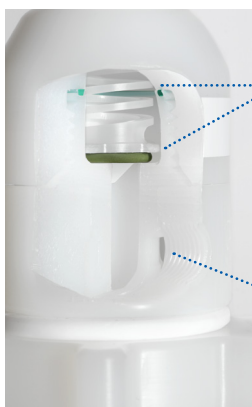


Dip tube showing the coding pins

2

Sealing gasket which closes the system automatically once the product flow stops. Product return flow is prevented.

Screw device to connect a venting filter which is recommended for safe and contamination free discharge of solutions.



Connected dispense head and dip tube showing coding pins and quick connector fit

For more information and documentation please contact:

Phone: 1-800-645-5476

E-mail: pcs.salesexpert@emdmillipore.com



EMD Millipore
290 Concord Road
Billerica, MA 01821, USA

www.emdmillipore.com

EMD Millipore and the M logo are trademarks of Merck KGaA, Darmstadt, Germany.
© 2013 EMD Millipore Corporation, Billerica, MA, USA. All rights reserved.

We provide information and advice to our customers on application technologies and regulatory matters to the best of our knowledge and ability, but without obligation or liability. Existing laws and regulations are to be observed in all cases by our customers. This also applies in respect to any rights of third parties. Our information and advice do not relieve our customers of their own responsibility for checking the suitability of our products for the envisaged purpose.