



Sodium Hydroxide Solution 1M - 58320C

Liquid Solutions MyWay

58320C is part of Liquid Solutions MyWay – a portfolio of high-quality sterile filtered liquids in prefilled single-use bags that are in stock and ready-to-ship.

- Manufactured in an ISO 9001:2015 certified facility
- A 12-month shelf life from the date of production (with a target of 24 months)
- Manufactured using Emprove® raw materials (complying with Ph. Eur.)
- Intended for bioprocessing and further manufacturing uses

Formulation 58320C - EMPROVE® raw materials

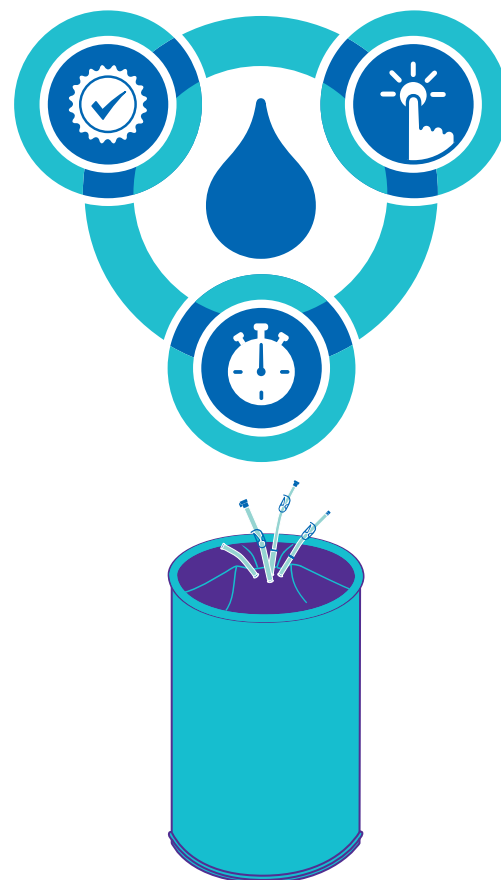
| CAS No. | Description | Amount (per L) |
|-----------|------------------------------------|----------------|
| 1310-73-2 | SODIUM HYDROXIDE SOLUTION 50% | 52.805 ml |
| 7732-18-5 | WATER FOR INJECTION (USP/Ph. Eur.) | to 1 L |

Outer packaging

All packaging sizes will be shipped in a stainless steel drum.

Ship testing (ISTA)

To safeguard delivery, all shipping containers were ISTA ship tested using a filled bag in an appropriate outer container. The 1 L and 20 L 2D bags were tested in accordance with ISTA 1A (International Safe Transit Association) that included a vibration and drop test as well as real-time shipping. The 190 L 3D bags were tested in accordance with ISTA 3E (for palletized loads).

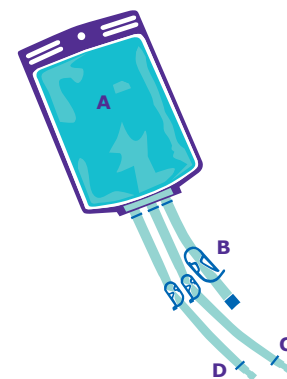


Product

| 58320C - Sodium hydroxide solution 1M | |
|---------------------------------------|---------------|
| 58320C-1BC / -1BNC | 10 x 1 L Bags |
| 58320C-20BC / -20BNC | 20 L Bag |
| 58320C-190BC / -190BNC | 190 L Bag |

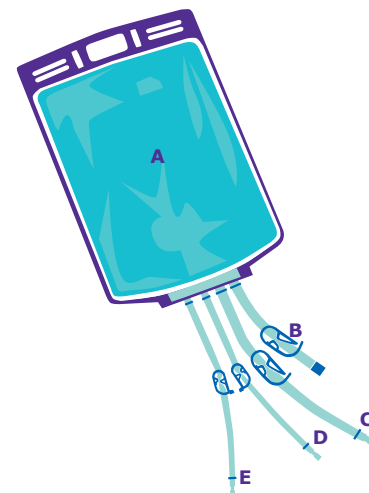
1 L Bag Description

| 58320C-1BC / -1BNC | Description | Material |
|--------------------|---|---------------------------------------|
| A Bag | 1 L Bag | ULDPE |
| B Filling Line | Filling Line, Sealed End | PVC/Silicone |
| C Connector 1 | 1/4 in. x 7/16 in. Tubing, 12 in. Length Coupling Insert 1/4 in. HB, MPC Sealing Cap, MPC | TPE Polycarbonate Polycarbonate |
| D Connector 2 | 1/4 in. x 7/16 in. Tubing, 12 in. Length 1/4 in. HB x Female Luer Adapter Male Luer Plug | TPE Polypropylene Polycarbonate |



20 L Bag Description

| 58320C-20BC / -20BNC | Description | Material |
|-------------------------------------|---|--|
| A Bag | 20 L Bag | ULDPE |
| B Filling Line | Filling Line, Sealed End | PVC/Silicone |
| C Connector 1 | 3/8 in. x 5/8 in. Tubing, 24 in. Length Coupling Insert 3/8 in. HB, MPC Sealing Cap MPC | TPE Polycarbonate Polycarbonate |
| D Connector 2 | 1/4 in. x 7/16 in. Tubing, 24 in. Length Coupling Body, 1/4 in. HB, MPC Sealing Plug, MPC | TPE Polypropylene Polycarbonate |
| E Connector 3 | 1/4 in. x 3/8 in. Tubing, 3 in. Length 1/4 in. x 1/8 in. HB Reduction Fitting 1/8 in. x 1/4 in. Tubing, 24 in. Length 1/8 in. HB x Female Luer Adapter (Needleless Injection site for non-hazardous products) Male Luer Plug/Cap | TPE Polypropylene TPE Polycarbonate Polycarbonate Polypropylene/ Polycarbonate |
| Total Tubing Length: approx. 28 in. | | |



190 L Bag Description

| 58320C-190BC / -190BNC | Description | Material |
|-------------------------------------|---|---|
| A Bag | 200 L Bag | ULDPE |
| B Filling Line | Filling Line, Sealed End | PVC/Silicone |
| C Connector 1 | 1/2 in. x 3/4 in. Tubing, 36 in. Length Coupling Body 1/2 in. HB, MPX Sealing Plug MPX | TPE Polycarbonate Polycarbonate |
| D Connector 2 | 1/2 in. x 3/4 in. Tubing, 3 in. Length 1/2 in. x 3/8 in. HB Reduction Fitting 3/8 in. x 5/8 in. Tubing, 36 in. Length Coupling Insert, 3/8 in. HB, MPC Sealing Cap, MPC | TPE Polypropylene TPE Polycarbonate Polycarbonate |
| Total Tubing Length: approx. 40 in. | | |
| E Connector 3 | 1/2 in. x 3/4 in. Tubing, 3 in. Length 1/2 in. x 1/4 in. HB Reduction Fitting 1/4 in. x 7/16 in. Tubing, 36 in. Length Coupling Body, 1/4 in. HB, MPC Coupling Insert, 1/4 in. HB, MPC 1/4 in. x 7/16 in. Tubing, 3 in. Length 1/4 in. HB Swabable Valve / Needleless Injection Site Male Luer Cap | TPE Polypropylene TPE Polycarbonate Polycarbonate TPE Polycarbonate/Silicone Polycarbonate |
| Total Tubing Length: approx. 43 in. | | |

